



# Electoral Review of Wiltshire Council

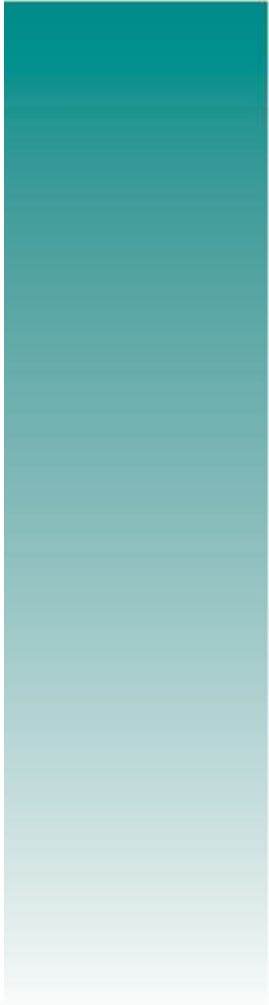
# Electoral Review

## Background

- 1<sup>st</sup> Review for Wiltshire since 2008.
- Will apply from the next elections in May 2021.
- The decision is made by Parliament, following recommendations from the Local Government Boundary Commission for England (LGBCE).



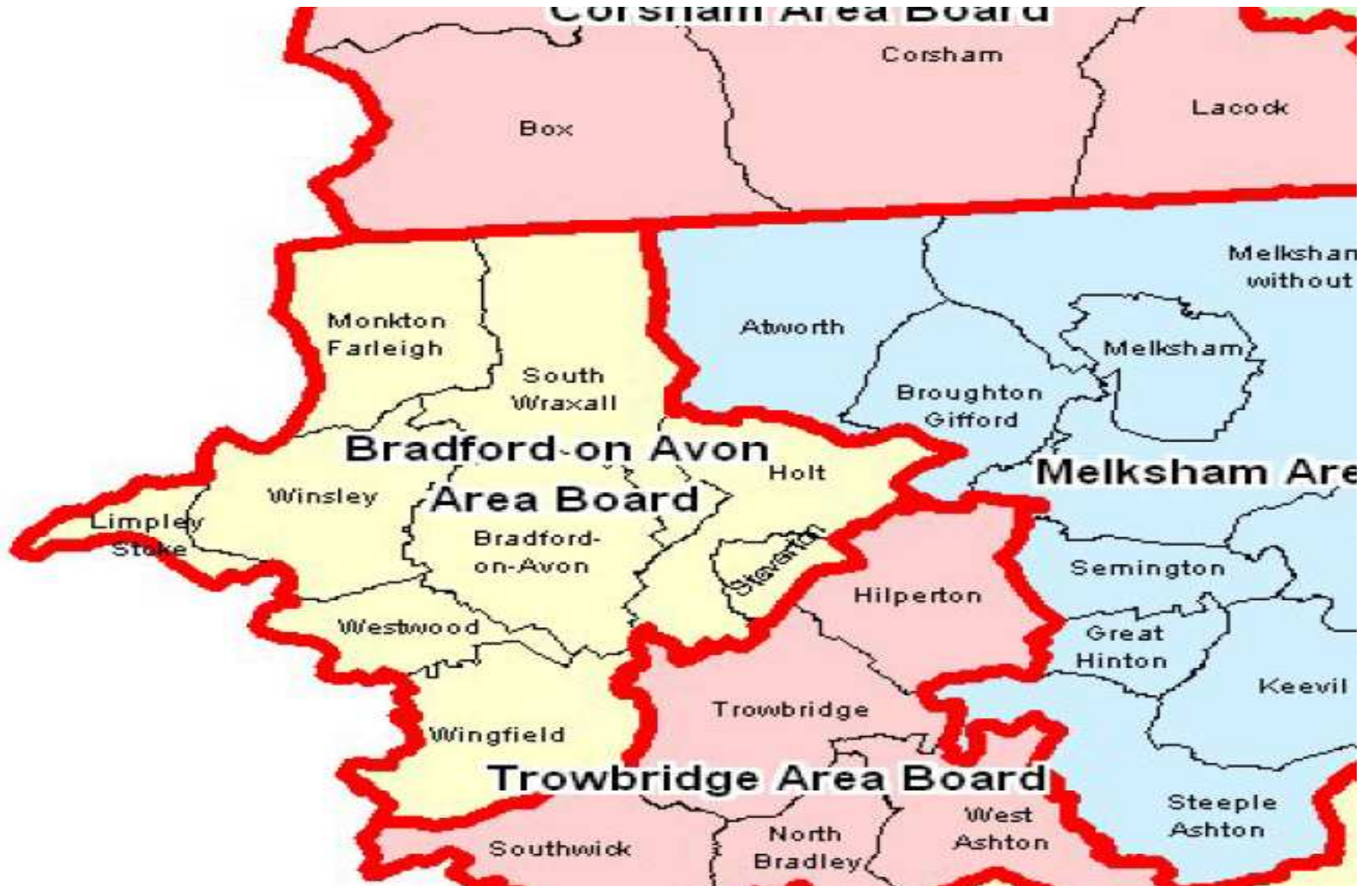
## **Preliminary Phase**

- Electoral Review Committee
  - Full Council approved a council size submission of 99 councillors based on Area Boards.
  - The LGBCE will inform the Council of its by the end of August.
- 

# Bradford on Avon Area Board



## Westbury Area Board Neighbours





**Total Current Electorate**

**14726**

**Current Average Division Council Wide**

**3752**

**Total Projected Electorate 2024 DRAFT**

**15771**

**Required Average Division Council Wide**

**To be announced**



## Parish Electorates 2024 **DRAFT**

Holt – 1560

Limpley Stoke – 463

Monkton Farleigh – 365

South Wraxall – 395

Staverton – 1424

Westwood – 971

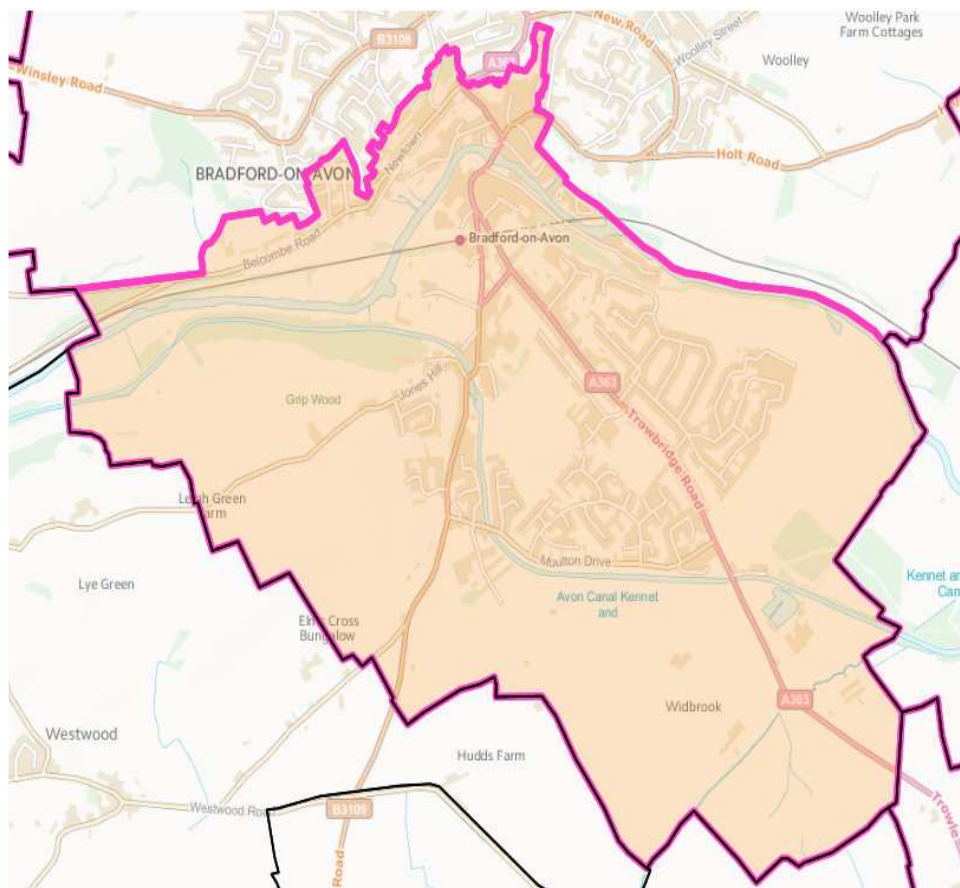
Wingfield – 294

Winsley – 1623

Bradford on Avon – 8611

Trowbridge (within Winsley and Westwood  
Division) - 64

# Current Electoral Divisions



## Bradford on Avon South

2017 Electorate –4091

2024 Projection – 4257

All numbers draft



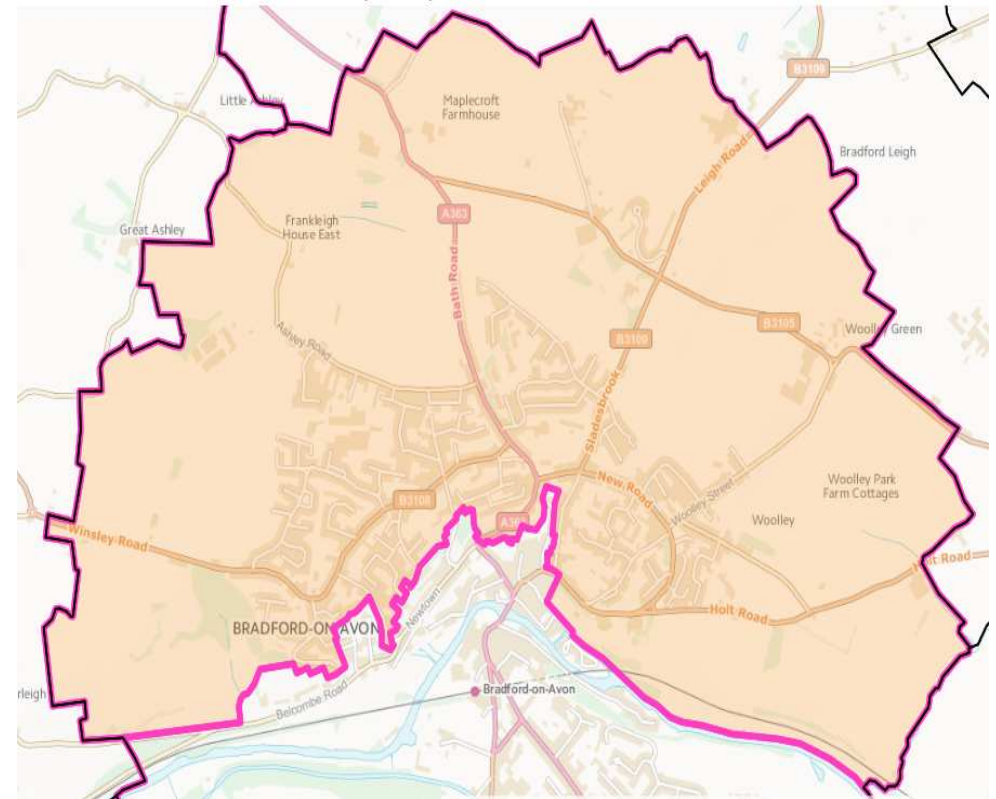
# Current Electoral Divisions

## Bradford on Avon North

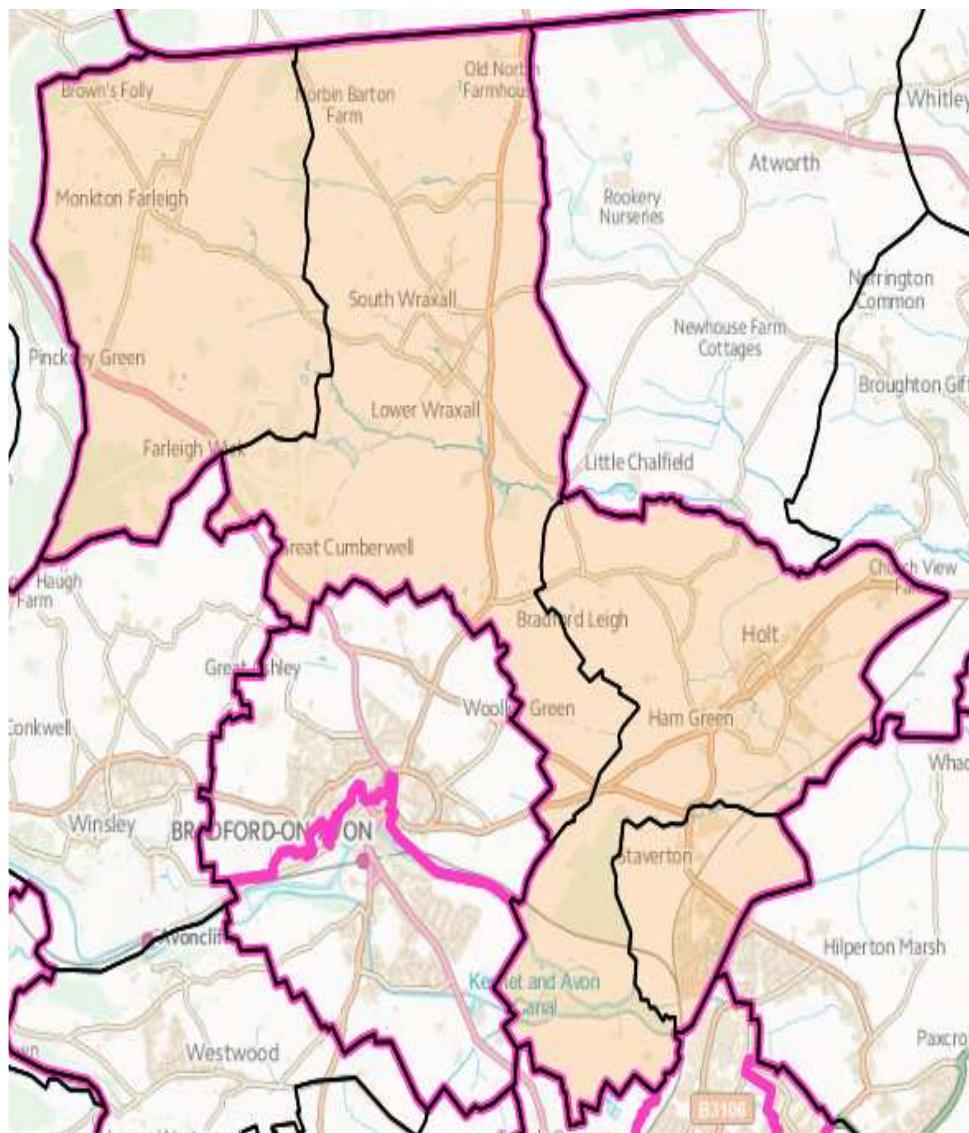
2017 Electorate – 3856

2024 Projection – 4353

All numbers draft



# Current Electoral Divisions



## Holt and Staverton

2017 Electorate –3491

2024 Projection – 3745

All numbers draft

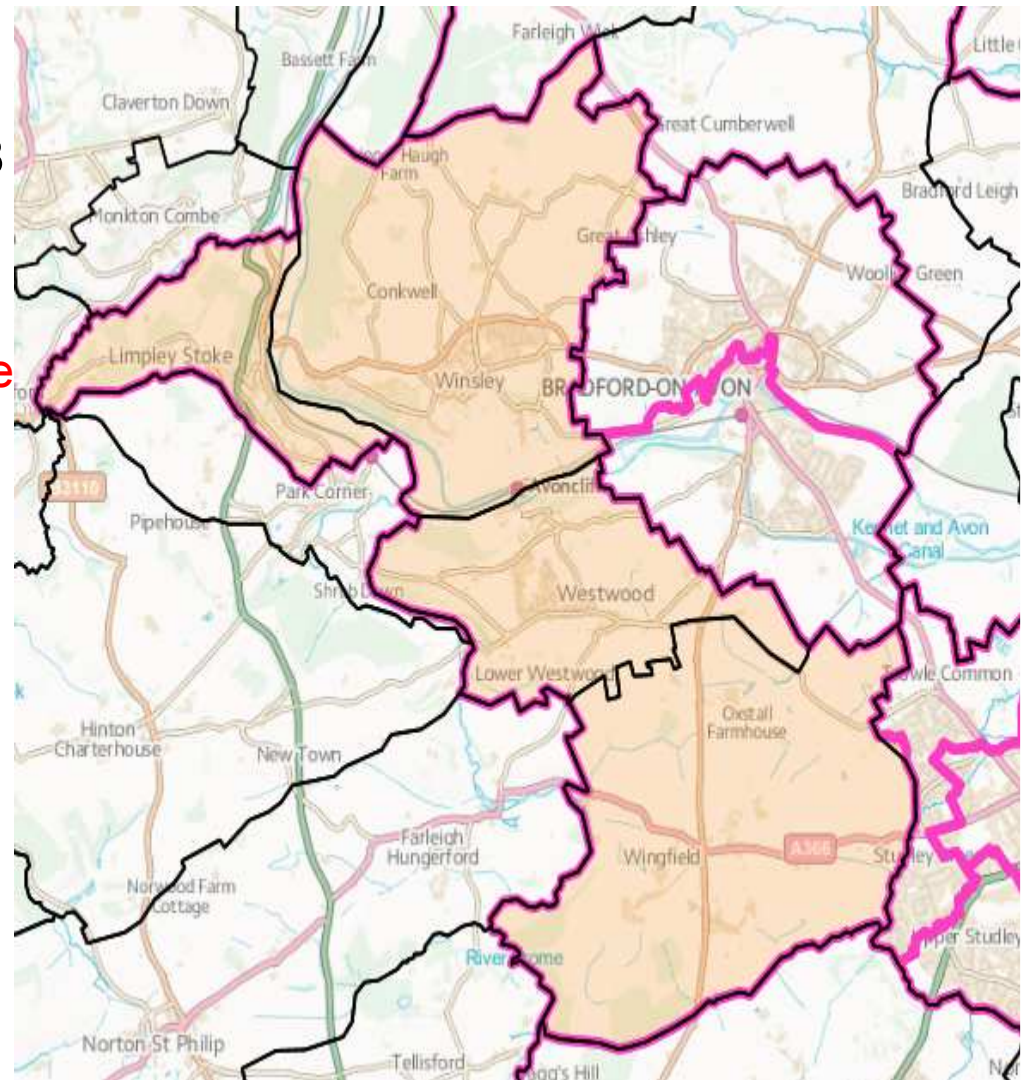
# Current Electoral Divisions

## Winsley and Westwood

2017 Electorate – 3288

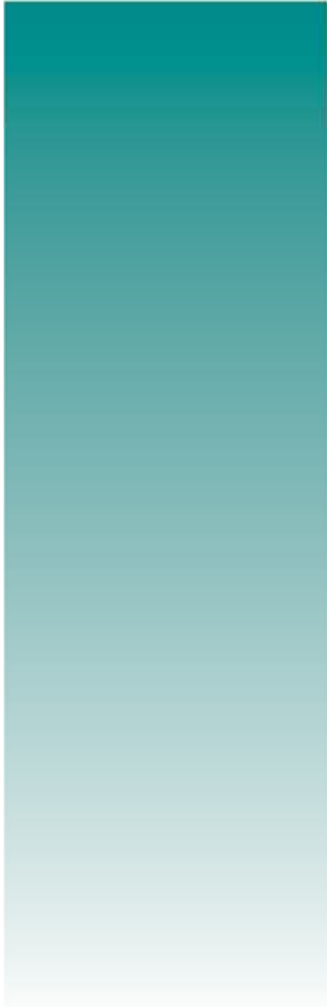
2024 Projection – 3416

All numbers draft  
(62/64 now in Trowbridge  
Parish)





## **Future stages**

- Draft Recommendations
  - Area Board Consultation
  - Final Recommendations
  - Parliamentary Approval
- 

# Public Consultation

- **24 August - November**
- <http://www.lgbce.org.uk/all-reviews>
- Wiltshire Webpage



# **Any Questions?**